

1

Background East Otero

- Organized in 1945
- Primarily in Otero County
- Governed by an elected five-member board

The Mission of EOCD is an organization of private landowners who monitor and solve conservation needs, secure funding, provide education and promote research. Other services include providing direction and advice to various federal and state agencies. The District also influences legislation on conservation issues. These services are provided to the landowners and general public to preserve production of the land and conserve the natural resources.

The function of EOCD is to make available technical, financial and educational resources, whatever their source, and focus or coordinate them so that they meet the needs of the local land manager with conservation of soil, water and related natural resources.

2

Background West Otero Timpas

- Organized in 1942 as Timpas Conservation District
- Organized in 1943 as West Otero Conservation District
- Consolidated in 2000
- Occupies a large portion of Otero and Crowley Counties

The Mission of WOTCD is to provide agricultural producers, other private landowners, county and local governments, students, and the general public with a forum for assistance and education regarding sound natural resources conservation practices within, but not limited to, the District.

The function of WOTCD is to make available technical, financial and educational resources, whatever their source, and focus or coordinate them so that they meet the needs of the local land manager with conservation of soil, water and related natural resources.

3

NRCS Programs



4

EQIP

Environmental Quality Incentive Program

Active		\$\$	Acres
OBCD	0	\$0.00	0
EOCD	8	\$1,443,486	616.0
WOTCD	32	\$3,805,064.	54,599



5

CRP

Crowley and Otero Counties

Sign up Number	Number of Contrats	Acres
49 & 54	6	2062.44
56	20	5243.56
58	9	2,551.79
TOTAL	35	9857.79



6

CRP

Pueblo County

Sign up Number	Number of Contrats	Acres
50	26	8955.53
56	30	11845.08
50	1	177.83
TOTAL	57	20,978.44



7

CSP

Conservation Stewardship Program

District	Number	\$\$	Acres
EOCD	3	68,178	618.3
OBCD	0	0	0
WOTCD	5	115,191	1,379.2



8

CSP

Grasslands Conservation Stewardship Program Crowley County

Contract Number	Number of Contracts	Acres
205	9	6441.29
206	13	18,621.13
200	0	0
201	13	21,644.37
202	0	0
TOTAL	35	40,906.79



9

CSP

Grasslands Conservation Stewardship Program Otero County

Contract Number	Number of Contracts	Acres
201	2	1,311.93
202	2	3,169.07
203	36	37,518.16
204	3	4,149.12
205	8	3,524.11
206	6	2,969.30
Total	57	52,641.69



10

Matching Grants

EOCD	WOTCD
\$25,000 grant +	\$16,800 +
\$7352.50 EOCD	\$1832 WOTCD
= \$32,352.50	= \$18,632

11

EOCD Matching Grant

7 landowners

754.34 Acres

1380' Irrigation pipe

2670' Gated Pipe

\$32,352.50 grant

\$32,352.50 producer match

+ \$8526.86 producer over spent

= 73,231.86 Total spent

12

WOTCD Matching Grant

4 landowners

3028.67 Acres

5976' Irrigation pipe

2550' Gated Pipe

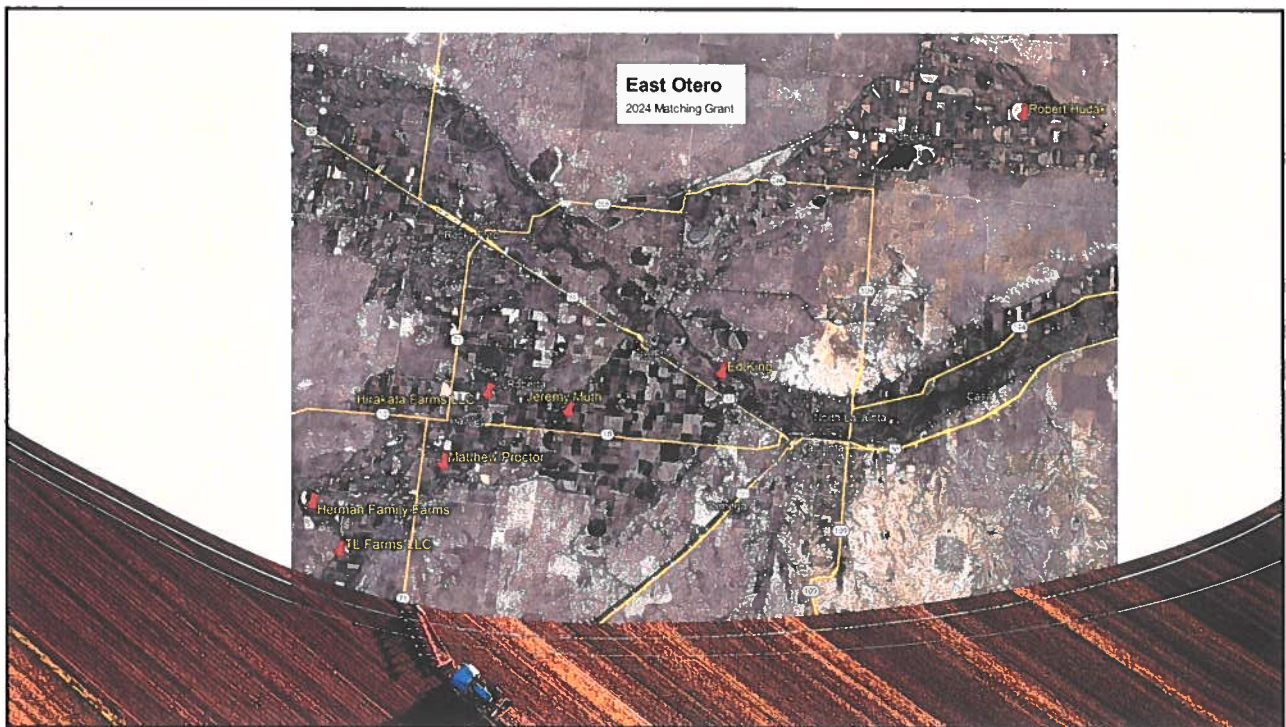
\$18,632 grant

\$18,632 producer match

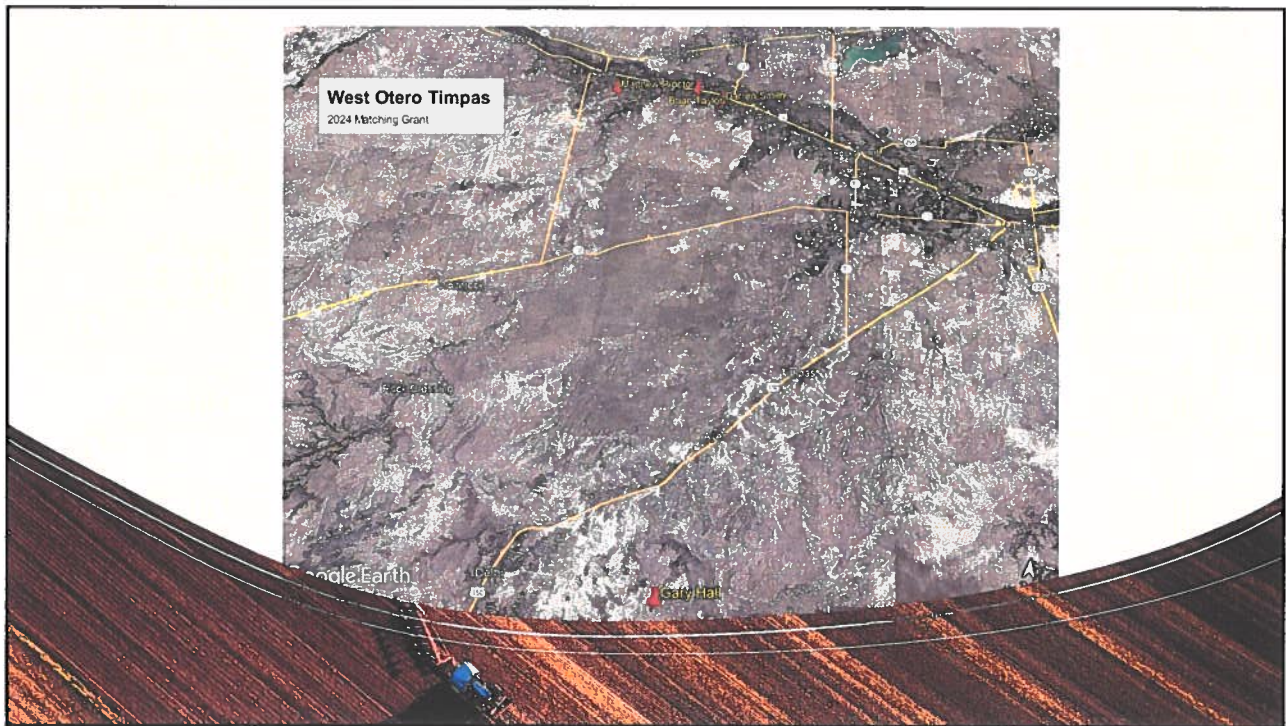
+ \$6,726.69 Producer over spent

= 50,717.38 Total spent

13



14



15

Initiative

WOTCD – 5 producers start 2022; 5 more in 2024; 1 will start in 2025

EOCD – 10 started in 2024; 1 will start in 2025



16

S.T.A.R. Program

- Receive funding assistance for soil health practices
- 3-year commitment
- 50% match, either cash or in-kind
- Monitor soil health practices
- Soil tests, paid for by state



17

Five Soil Health Principles:

- Soil Armor
- Minimize Soil Disturbance
- Plant Diversity
- Continual Live Plant/Root
- Livestock Integration



18

Local Work Group

I. Critical Resource Concerns

Irrigated Cropland

1. Source water depletion
2. Wind erosion leads to soil erosion
3. Degraded plant condition
4. Pest Pressure – prairie dogs

Rangeland / Pastureland

1. Source water depletion – inadequate water
2. Degraded Plant Condition – over grazing
3. Wind erosion

19

II. Top Conservation Practices

Irrigated Cropland

1. No Till, Reduced tillage
2. Center Pivots; Underground irrigation pipe, Drip - Irrigation, Gated Pipe
3. Crop Rotation; some cover crops
4. Land Leveling; Irrigation Water Management
5. Land Leveling

Rangeland / Pastureland

1. Fences
2. Stock Tanks
3. Livestock Pipelines

20

III. Practices attempted but not work

Irrigated Cropland

Cover Crops, due to lack of water

Rangeland / Pastureland

Stocking Rates don't match our situation

IV. Barriers that inhibit use of practices?

Politics in the new Farm Bill

Labor and Material Costs

Cost vs Benefit – return on investment

Time

Labor Availability

Communication – how get the word out

21

V. New technologies being used

Advanced technology to replace labor

Drones and Robots

CPS on tractors

VI. Additional Comments

We would like the Targeted money back

We would like the Source Water money back

The limits placed on board members concerning the matching grants only punish the board member. It makes it harder and harder to recruit board members.

22

Education

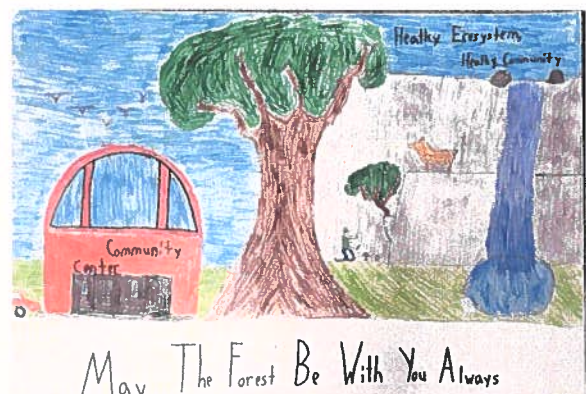
23



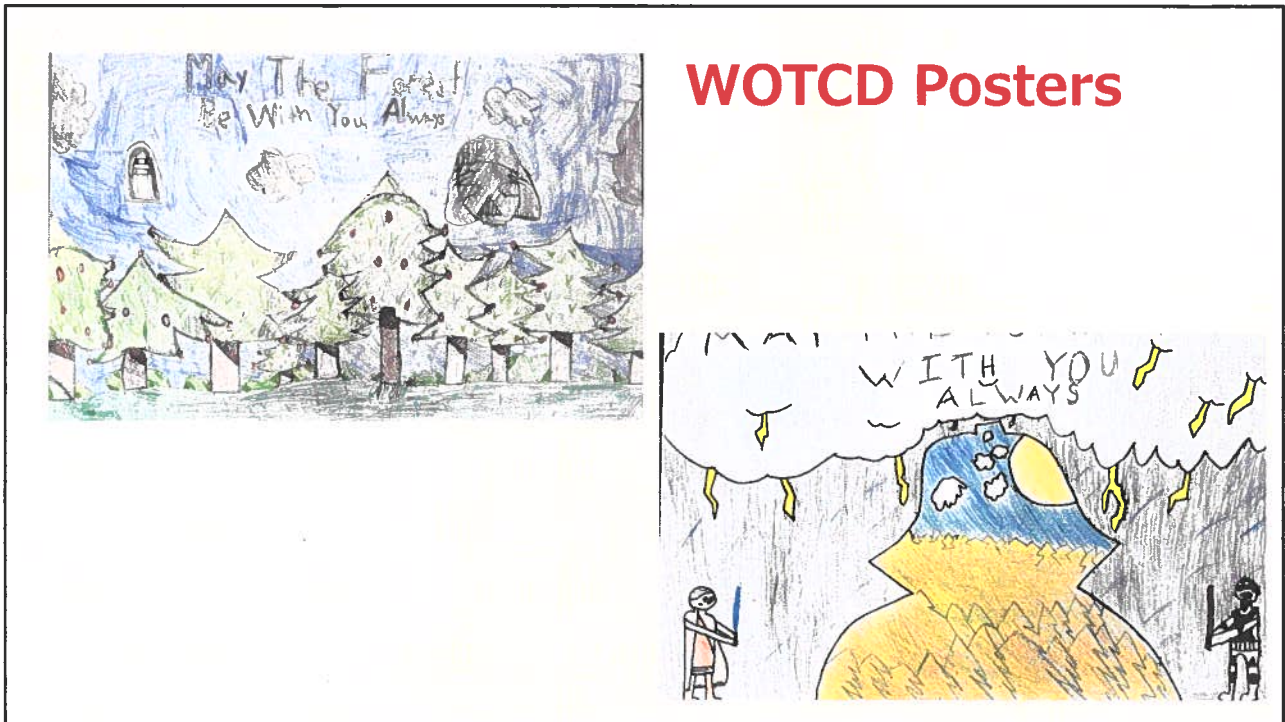
Cheraw

EOCD Posters

Swink



24



25



**FFA Range Judging – Southeast region
September 25, 2024**

26

Literacy Project



March 5th, Crowley County, 1st grades

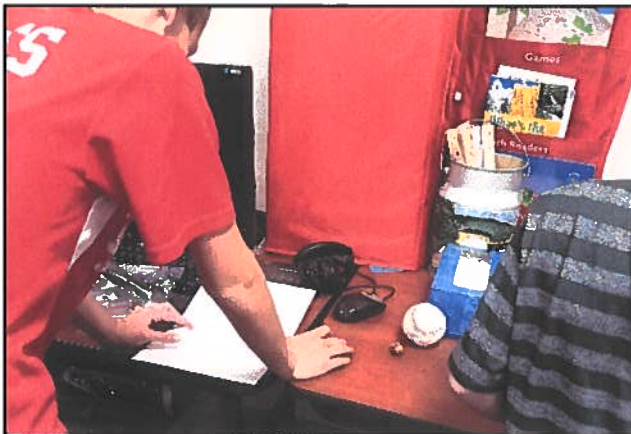
March 7th, Swink, 1st grades

March 11, Rocky Ford, 2nd grades

March 12th, Manzanola, 1st & 2nd grades

March 13th, La Junta, 1st grades

27



Arbor Day
Swink, Rocky Ford, Manzanola, Cheraw

28



**River Trailer
Manzanola, Rocky Ford, Swink**

29

2024
Class of

East Otero Conservation District

Student	Proposed Course of Study	School
JaSanna Butler	Construction / Welder	Otero College
Emilee Carroll	Agriculture Business	Oklahoma Panhandle State University
Kaylee Tucker	Animal Science	Trinidad State Junior College

30

2024 Class of

West Otero Timpas Conservation District

Student	Proposed Course of Study	School
Mya Zamora-Estrada	Nurse	Otero College
Lucero Garcia-Cruz	Radiologic Sonographer	Otero College

31

CSU Extension
CSU Diagnostic Lab
CSU Research Center



32

Other Activities

33



**EOCD
Conservationist
of the Year**

Wesley Herman

34

Employees

Jill Taylor
District Conservation
Technician

Nancy Aschermann
District Manager



35

EOCD & OBCD Own and Manage the Service Center Building



Built	1964
Addition	1974
Purchased	2008
Paid In Full	2018

36



Dennis Caldwell



Chris Tomky



Ken Maier



Ross Nielsen

EOCD Board Members

37

WOTCD Board Members

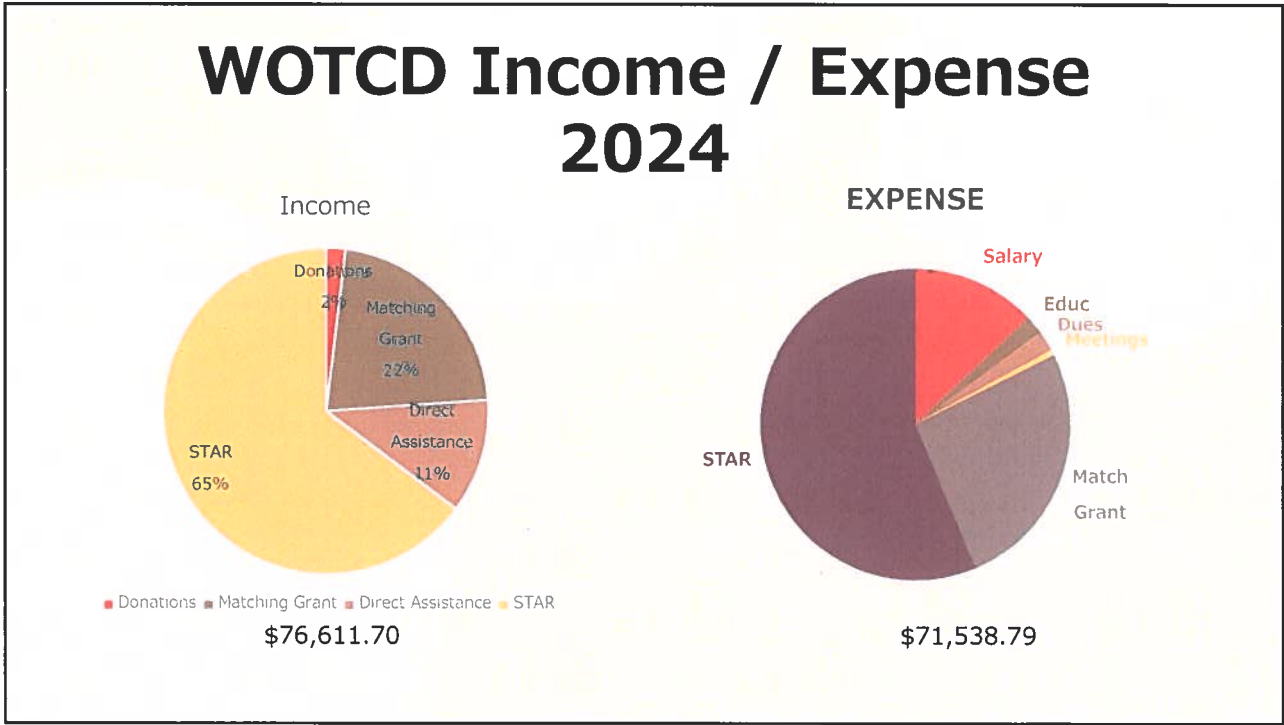


38



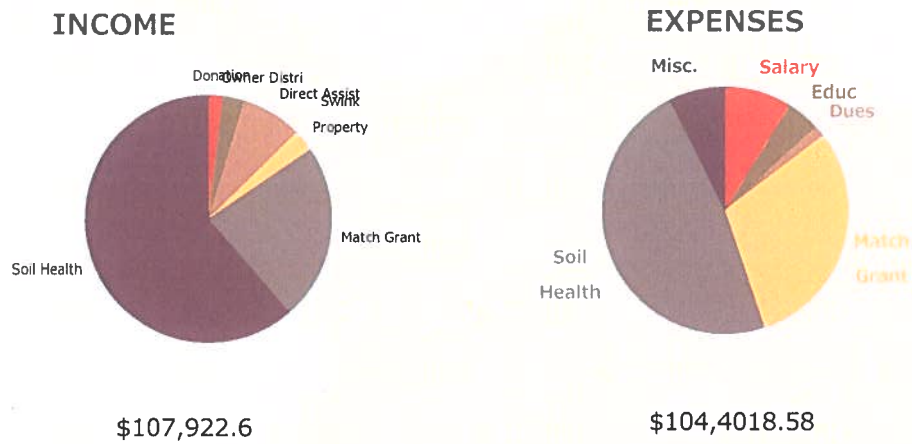
Finances

39



40

EOCD Income / Expense 2024



41

*“When rural communities
succeed, America succeeds.”
Tom Vilsack*



42

- East Otero Conservation District
- West Otero Timpas Conservation District
 - 200 South 10th Street
 - Rocky Ford, CO 81067
 - [http:// rfcd.colorado.gov/](http://rfcd.colorado.gov/)
- Facebook: RF Conservation Districts